

CATALOG #: _____

TYPE: _____

PROJECT: _____



FEATURES

- Transparent lensed door provides a barrier between the room and the diffuser to discourage vandals and minimize contaminants
- Double or triple gasketing options available
- Ribbed acrylic diffuser shields LEDs from direct view
- T-slot steel hinge allows reversible hinging and latching and ensures positive retention when door is opened
- Optional anti-microbial white finish available for use in healthcare applications
- Wireless in-fixture control solutions available
- Made Right Here® in the USA

SPECIFICATIONS

- HOUSING** – 22-gauge die-formed C.R.S.
- DOOR FRAME & LENS** – Transparent acrylic lens with .236" thick polycarbonate underlay, mounted in .050" thick extruded aluminum door frame, flat with mitered corners secured with six tamper-resistant, tri-groove screws.
- REFLECTOR** – Precision die-formed C.R.S. with highly reflective, non-glare matte white polyester powder coated finish.
- FINISH** – 92% minimum average reflective white polyester powder coat bonded to phosphate-free, multi-stage pretreated metal. All parts painted after fabrication to facilitate installation, increase efficiency, and inhibit corrosion.
- ELECTRICAL** – High-quality mid-power LED boards. L70 at 50,000 hours.
- MOUNTING** – NEMA Type "G" 15/16" or 1" grid standard. For NEMA Type "NFG" and "SG" 9/16" grid installations, specify EQCLIPS option. Drywall flange type available.
- LISTINGS** –
 - CCSAUS certified as luminaire suitable for dry or damp locations.
 - City of Chicago Environmental Air approved when specified with CP option.
 - Complies with the Buy American Act and other federal regulations. Request certification at hew.com/baa.
- WARRANTY** – 5-year limited warranty, see hew.com/warranty.

ORDERING EXAMPLE: VDILG - S24 - L64/835 - FAD - OPTIONS - CONTROL/DIM - UNV

ORDERING INFO

SERIES	CEILING TYPE	FIXTURE STYLE	WIDTH	LENGTH	LUMENS ^[1]	CRI	CCT
VDIL	G 15/16" or 1" grid F Flange ^[2]	S Full door frame, no reveal	2 2'	2 2'	2x2	8 80	27 2700K
					L18 1,800lm	9 90 ^[3]	30 3000K
				4 4'	L22 2,200lm		35 3500K
					L31 3,100lm		40 4000K
					2x4		50 5000K
					L36 3,600lm		
					L45 4,500lm		
					L62 6,200lm		

DOOR FRAME	SHIELDING	OPTIONS
F Flat aluminum	AD Acrylic WPR White perforated round	EM/10WLP Low-profile 10-watt emergency battery 20GA 20-gauge C.R.S. housing EQCLIPS Earthquake clips ^[4] DG Double gasket ^[5] TG Triple gasket ^[6] (L__) Additional lower lumen packages available. Specify in increments of 100 nominal lumens. Option must be specified with next higher lumen package. Example: 5,500 nominal lumens = VDILG-S24-L62/835-(L55) CP Chicago plenum (CCEA) AMW Anti-microbial white finish

CONTROL ^[7]		DRIVER ^[8]	VOLTAGE
–	None	DIM Driver with external dimming wires	120 120V
AVI-LVFA	Avi-on wireless fixture control ^[9]	DRV Driver without external dimming wires	277 277V
AVI-LVFA-CS2-PIR	Avi-on wireless fixture control with PIR motion and daylight sensor ^[10]	DA Driver with 12V auxiliary power, without external dimming wires ^[13]	UNV 120-277V
AWNRR	Lutron Athena wireless node integral fixture control, RF only ^[11]	DSR Sensor-ready driver without external dimming wires (D4i DALI-2) ^[14]	347 347V ^[15]
AWNS	Lutron Athena wireless node integral fixture control, RF with daylight and occupancy sensing ^[12]		

ACCESSORIES

TPTG TOOL Tamper-resistant tool for tri-groove screws. ^[16]

NOTES

- Lumen output based on AD Shielding, 80 CRI/3500K CCT. Actual performance may vary +/-5%. See page 2 for FIXTURE PERFORMANCE DATA. Additional lumen packages available, see Options.
- See page 3 for F CEILING TYPE INSTALLATION.
- Extended lead times may apply. Consult factory for availability.
- 4 per fixture. Optional for 1" grid installations. Required for 9/16" grid mounting. Not available with F Ceiling Type.
- See page 3 for GASKETING DETAILS.
- Field-installed. See page 3 for GASKETING DETAILS.
- See page 4 for AVI-ON BLUETOOTH WIRELESS CONTROL DETAILS. See page 3 for SENSOR & NODE PLACEMENT DETAILS.
- See page 5 for ADDITIONAL DRIVER OPTIONS.
- DA Driver only.
- DA Driver only.
- DA and DSR Drivers only.
- DA and DSR Drivers only.
- Avi-on and Lutron Athena Controls only.
- Lutron Athena Controls only.
- Not available with EM batteries, DA, or DSR drivers.
- Tamper-resistant tool must be ordered separately. Please specify quantity required per project.



FIXTURE PERFORMANCE DATA

	LUMEN PACKAGE	DELIVERED LUMENS	WATTAGE	EFFICACY (LM/W)
2x2	L18	1,818	19.6	93
	L22	2,227	23.9	93
	L31	3,064	31.2	98
2x4	L36	3,637	37.7	96
	L45	4,532	48.0	94
	L62	6,193	62.8	99

- Photometrics tested in accordance with IESNA LM-79. Results based on AD shielding, 80 CRI/3500K CCT, average wattage for 120V through 277V input, and 25°C ambient temperature. Actual performance may vary +/-5%.
- To calculate lumen output in emergency mode, multiply the battery wattage by the efficacy.
- Use multiplier table to calculate additional options.

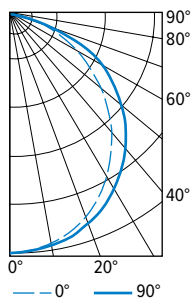
MULTIPLIER TABLES

COLOR TEMPERATURE	
CCT	CONVERSION FACTOR
2700K	0.97
3000K	0.99
3500K	1.00
4000K	1.03
5000K	1.06

80 CRI	
2700K	0.80
3000K	0.82
3500K	0.83
4000K	0.86
5000K	0.89

PHOTOMETRY

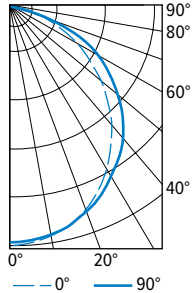
VDILG-S22-L31/835-FAD Total Luminaire Output: 3064 lumens; 31.2 Watts | Efficacy: 98.2 lm/W | 80 CRI; 3500K CCT



VERTICAL ANGLE	HORIZONTAL ANGLE			ZONAL LUMENS
	0°	45°	90°	
0	1203	1203	1203	
5	1196	1193	1195	113
15	1137	1146	1158	323
25	1024	1048	1074	482
35	866	907	952	567
45	682	736	800	569
55	486	543	628	491
65	293	348	414	344
75	123	147	149	151
85	14	17	13	23
90	1	2	1	

LUMEN SUMMARY	ZONE	LUMENS	% FIXTURE
	0 - 40	1486	49
	0 - 60	2546	83
	0 - 90	3064	100
	0 - 180	3064	100

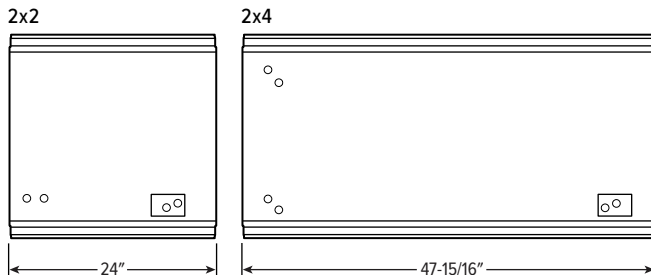
VDILG-S24-L62/835-FAD Total Luminaire Output: 6193 lumens; 62.8 Watts | Efficacy: 98.7 lm/W | 80 CRI; 3500K CCT



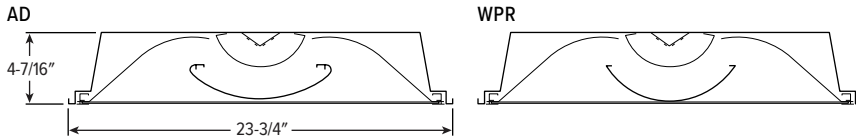
VERTICAL ANGLE	HORIZONTAL ANGLE			ZONAL LUMENS
	0°	45°	90°	
0	2392	2392	2393	
5	2414	2370	2368	226
15	2288	2266	2282	641
25	2059	2066	2108	955
35	1760	1807	1881	1133
45	1400	1484	1570	1143
55	1008	1106	1228	997
65	624	730	820	715
75	271	307	313	328
85	35	39	39	54
90	2	2	2	

LUMEN SUMMARY	ZONE	LUMENS	% FIXTURE
	0 - 40	2956	48
	0 - 60	5096	82
	0 - 90	6193	100
	0 - 180	6193	100

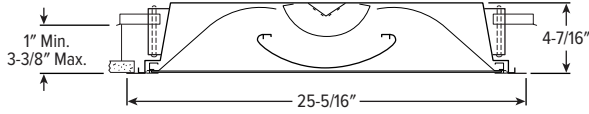
FIXTURE DETAILS



CROSS SECTIONS

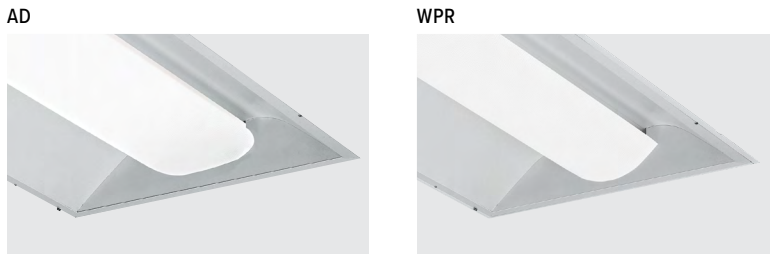


F CEILING TYPE INSTALLATION



Note: Maximum recommended ceiling opening is 24-3/8" x 24-3/8" for 2'x2' and 24-3/8" x 48-3/8" for 2'x4'. For continuous row mounting, add 49-5/16" for each additional fixture to obtain ceiling opening. 1-5/16" between end plates.

SHIELDING DETAILS

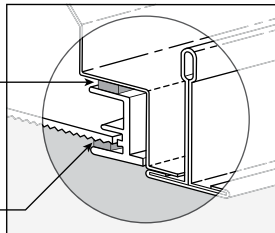


GASKETING DETAILS

DOUBLE GASKETING (DG OPTION)

First gasketing factory-installed between door frame and luminaire housing prevents light leak and reduces dust ingress.

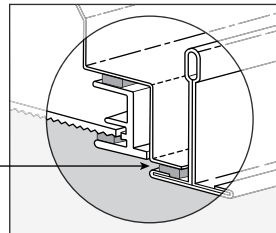
Second gasketing factory-installed between door frame and lens reduces dust and bug contaminants.



TRIPLE GASKETING (TG OPTION)

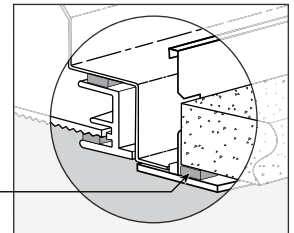
T-bar

Third gasketing field installed between bottom perimeter of fixture and T-bar ceiling seals plenum dust from the room.

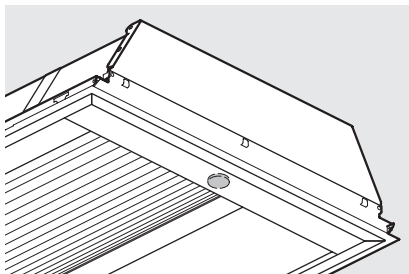


Drywall

Between bottom perimeter of fixture and hardpan ceiling.



SENSOR & NODE PLACEMENT DETAILS



AVI-ON BLUETOOTH WIRELESS CONTROL DETAILS

FEATURES

Simple

- Gateway-free distributed control
- Factory pre-commissioning
- Contractor friendly installation
- Occupancy/vacancy/daylight sensing

Scalable

- Virtually unlimited network size
- Spans small offices to large warehouses
- Flexible control strategies

Secure

- Optional cloud connectivity
- UL IoT platinum security rating
- DLC 5.0 compliant

COMMISSIONING & INSTALLATION TOOLS

Avi-on mobile apps provide intuitive, quick installation and commissioning. Pro tools are available to qualified installers. Live commissioning training and on-site or remote support by Avi-on must be ordered separately through Avi-on.



Commissioning Mobile App

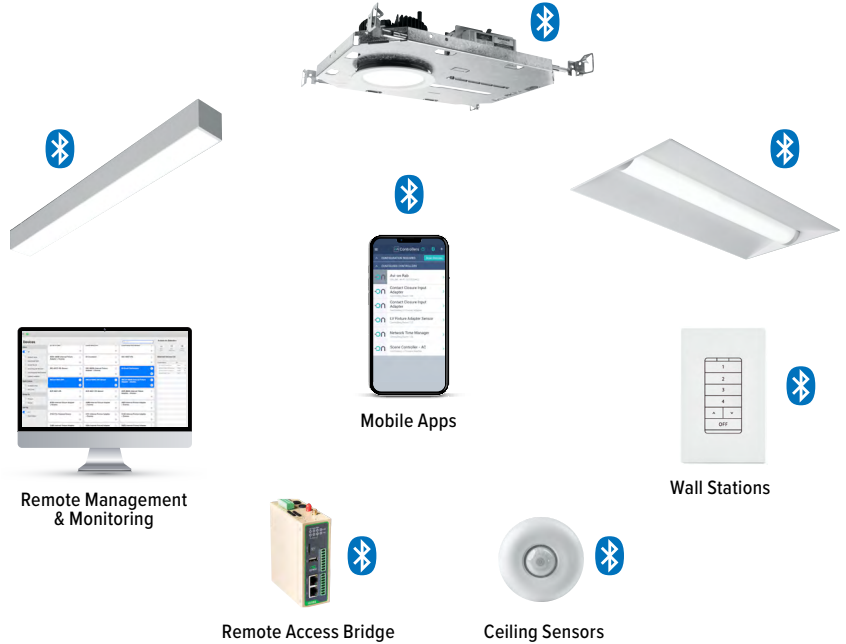


Zone Scanner Web App



Commissioning Pro App

SYSTEM COMPONENTS



The Bluetooth® word mark and logos are registered trademarks owned by Bluetooth SIG, Inc. and any use of such marks by Avi-on is under license. Other trademarks and trade names are those of their respective owners.

ACCESSORIES

WALL STATIONS	
AVI-2401AC	Scene controller - numbered 1-4, 120-277VAC
AVI-2402BAT	Scene controller - numbered 1-4, battery powered
AVI-2401AC-2	Dimmer with presets - percentages, 120-277VAC
AVI-2402BAT-2	Dimmer with presets - percentages, battery powered
AVI-2401AC-3	On/off/dimming, 120-277VAC
AVI-2402BAT-3	On/off/dimming, battery powered

NETWORK	
AVI-RAB-LTE	Remote access bridge
AVI-KIT-NTM	Network time manager with battery backup
CEILING MOUNT SENSORS	
AVI-KIT-SEN-DUCM	PIR motion and ultrasonic sensor kit
AVI-KIT-SEN-ICM	PIR motion and photocell sensor kit

For load controllers and additional accessory info, see hew.com/avi-on

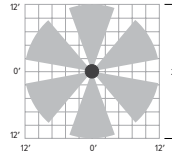
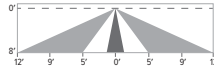
AVI-LVFA-CS2-PIR Avi-on wireless fixture control with PIR motion and daylight sensor. DA Driver only.

SPECIFICATIONS	
TYPE	PIR Motion + Daylight
MOUNTING HEIGHT	8' – 10'
DETECTION ANGLE	360°
TEMPERATURE RANGE	-30° to 50°C
RELATIVE HUMIDITY	10 to 80% non-condensing
IP RATING	IP20
MANUFACTURER	Avi-On

SENSOR COVERAGE PATTERNS

Side View

8' height: ø24' coverage



SENSOR DETAIL




Dimensions: 13/16" x 2-1/4"

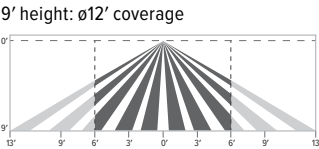


ADDITIONAL CONTROL OPTIONS

AWNS Lutron Athena wireless node integral fixture control, RF with daylight and occupancy sensing. DA and DSR Drivers only.

SPECIFICATIONS	
TYPE	Radio Frequency
MOUNTING HEIGHT	8' – 12'
DETECTION ANGLE	360°
TEMPERATURE RANGE	0° to 55°C
RELATIVE HUMIDITY	0 to 90%, non-condensing
COMMISSIONING	Clear Connect gateway – Type X with app (iOS or Android)
MANUFACTURER	Lutron
	

SENSOR COVERAGE PATTERNS



Motion Sensor Coverage

CEILING HEIGHT	COVERAGE AREA (SQ FT)
8'	114
9'	144
10'	178
12'	256

SENSOR DETAIL



Dimensions: ø1-1/8"

ATHENA CONTROL OPTIONS

CATALOG NUMBER	DESCRIPTION
AWNRR	Lutron Athena wireless node integral fixture control, RF only, for use with D4i DALI-2 or driver with 12V auxiliary power
AWNS	Lutron Athena wireless node integral fixture control, RF with daylight and occupancy sensing, for use with D4i DALI-2 or driver with 12V auxiliary power
AWNRR-BL	Lutron Athena wireless node integral fixture control, RF only, for use with D4i DALI-2 or driver with 12V auxiliary power, black finish
AWNS-BL	Lutron Athena wireless node integral fixture control, RF with daylight and occupancy sensing, for use with D4i DALI-2 or driver with 12V auxiliary power, black finish

ADDITIONAL DRIVER OPTIONS

Note: Lumen restrictions apply, consult product builder at hew.com/product-builder.

CATALOG NUMBER	DESCRIPTION
DRV	Driver prewired for non-dimming applications
DIM	Dimming driver prewired for 0-10V low voltage applications
DIM1	1% dimming driver prewired for 0-10V low voltage applications
DIM LINE	Line voltage dimming driver (TRIAC and ELV compatible, 120V only)
DIM TRC	Line voltage dimming driver (TRIAC compatible, 120V only)
DA	Driver with 12V auxiliary power
DSR	Sensor-ready driver (D4i DALI-2)
SD40	40% step-dimming driver
SD50	50% step-dimming driver
DALI	DALI dimming driver
LDE1	Lutron Hi-lume 1% EcoSystem dimming LED driver