

CATALOG #: _____

TYPE: _____

PROJECT: _____

FEATURES

- Designed to illuminate sidewalks, entryways, perimeters or facades
- Intended for use in both uplight and downlight applications
- Savings of up to 80% energy compared to HID systems
- Blends seamlessly with a variety of architectural styles
- Made Right Here® in the USA

SPECIFICATIONS

- HOUSING** – Die-cast aluminum enclosure.
- THERMAL MANAGEMENT** – Integral die-cast aluminum heatsink and LED assembly provide passive thermal management. Rated -30°C to 40°C ambient operating temperature (-20°C to 40°C with EM/10WC; 0°C to 39°C with EM/4W).
- OPTICAL SYSTEM** – Precision, injection-molded, refractive acrylic lensing produces standard IES distributions.
- LED ASSEMBLY** – ANSI 3000K, 4000K, or 5000K CCT, minimum 70 CRI LEDs.
- LED DRIVER** – 0-10V dimming.
- ELECTRICAL** – 120-277, 347, and 480 VAC input range; 50-60Hz; power factor >.90; THD <20% at full load. FCC Class A compliant. 10kA/10kV surge protection standard. Quick-disconnect wiring provided. L70 >50,000 hours per IES TM-21.
- FINISH** – Super durable polyester powder coat bonded to phosphate-free, multi-stage pretreated metal, meets and exceeds AAMA 2604 specifications for outdoor durability.
- MOUNTING** – Surface mounts directly over a 4" maximum outlet box. Must be anchored to adequate structure that can safely support fixture weight (VWPH = 15 lbs, VWPV = 23 Lbs).
- LISTINGS** –
 - cCSAus certified as luminaire suitable for wet locations.
 - DesignLights Consortium qualified product. Not all versions of this product may be DLC qualified, see the DLC Qualified Products List at www.designlights.org/QPL.
 - IDA Dark-Sky approved (downlight applications only).
 - RoHS compliant.
 - IP65 rated.
 - Title 24 compliant with OCCWS FSP-211-L_ option.
- WARRANTY** – 5-year limited warranty, see hew.com/warranty.

ORDERING EXAMPLE: VWP H - L30/740 - T3 - DBZ - SDGL - OPTIONS - DIM - UNV

ORDERING INFO

SERIES	TYPE	LUMENS ^[1]	CRI	CCT	DISTRIBUTION ^[2]
VWP	H Horizontal	L30 3,000lm	7 70	30 3000K	T3 Type III
	V Vertical	L60 6,000lm		40 4000K	TFT Type forward throw
				50 5000K	

FINISH OPTIONS ^[3]

- BLK** Black (RAL #9004)
- DBZ** Dark bronze
- DBR** Medium bronze
- GRAY** Standard gray
- SLV** Satin aluminum (RAL #9006)
- WHT** White (RAL #9003)

SHIELDING

- SDGL** Micro-prismatic tempered glass lens
- CGL** Clear tempered glass lens

OPTIONS

- EM/4W** 4-watt integral emergency LED driver^[4]
- SF** Single fuse^[5]
- DF** Double fuse^[6]
- PC** Factory-installed button-style photocell^[7]
- HSGX** Empty housing extension used to match units with EM, OCC, or conduit entry options.

DRIVER

- DIM** Dimming driver prewired for 0-10V controls

VOLTAGE

- 120** 120V
- 208** 208V
- 240** 240V
- 277** 277V
- UNV** 120-277V
- 347** 347V^[13]
- 480** 480V^[14]

CONDUIT ENTRY ^[8]

- CR** Right side conduit entry^[9]
- CL** Left side conduit entry^[10]
- CD** Dual conduit entry

VWPH ONLY

- EM/10WC** 10-watt emergency LED driver^[11]
- OCCWS FSP-211-L_** Factory-installed occupancy sensor^[12]
- FSIR-100** Remote controller for occupancy sensor

NOTES

- Lumen output based on 3500 CCT. Actual lumens may vary +/-5%, see page 2 for FIXTURE PERFORMANCE DATA. Additional lumen package available, see options
- See page 2 for DISTRIBUTION DETAILS.
- See page 3 for FINISH OPTIONS.
- 120-277V only; VWPV includes housing extension, increases fixture depth. See page 2 for FIXTURE DETAILS.
- 120V, 277V, or 347V only; must specify voltage
- 208V, 240V, or 480V only; must specify voltage
- 120V, 208V, or 277V only; must specify voltage. Not available when specified with OCCWS option. See page 3 for OPTIONS DETAILS. Right side when viewed from behind fixture.
- Fixtures require housing extension when specified with conduit entry. Increases fixture depth. Conduit entry provided with 1/2" NPT tapered pipe thread and plug. Increases fixture height. Conduit fitting to be supplied by others. Left and right when viewed from behind fixture.
- Left and right when viewed from behind fixture.
- Left and right when viewed from behind fixture.
- Low temperature, includes housing extension increases fixture depth; 120-277V only; not available with CR and CD options. See page 2 for FIXTURE DETAILS.
- Includes housing extension (increases fixture depth), must specify lens. Optional FSIR-100 remote controller available, ordered separately. See page 3 for OCCUPANCY SENSOR DETAILS.
- Includes stepdown transformer
- Includes stepdown transformer

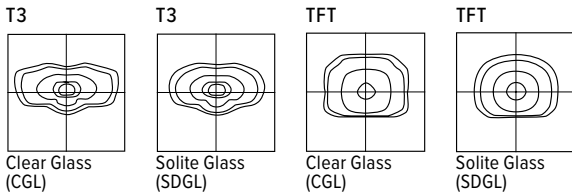


FIXTURE PERFORMANCE DATA

	LED PACKAGE	DISTRIBUTION	WATTAGE	CCT	CLEAR GLASS (CGL)		SOLITE GLASS (SDGL)		BUG RATINGS	
					DELIVERED LUMENS	EFFICACY (lm/W)	DELIVERED LUMENS	EFFICACY (lm/W)		
WVPH	L30	T3	36	3000	3174	88.2	2963	82.3	B1-U0-G1	
				4000	3327	92.4	3106	86.3		
				5000	3438	95.5	3209	89.1		
		TFT		3000	2713	75.4	2533	70.4		B1-U0-G1
				4000	2844	79.0	2655	73.8		
				5000	2939	81.6	2743	76.2		
	L60	T3	70	3000	5933	84.8	5887	84.1	B1-U0-G1	
				4000	6611	94.4	6172	88.2		
				5000	6831	97.6	6376	91.1		
		TFT		3000	5470	78.1	5065	72.4		B2-U0-G1
				4000	5688	81.3	5309	75.8		
				5000	5876	83.9	5486	78.4		
WVPU	L30	T3	36	3000	3115	86.5	2908	80.8	B1-U0-G1	
				4000	3403	94.5	3177	88.3		
				5000	3385	94.0	3160	87.8		
		TFT		3000	2840	78.9	2651	73.6		B2-U0-G1
				4000	3103	86.2	2896	80.4		
				5000	3086	85.7	2881	80.0		
	L60	T3	70	3000	6171	88.2	5813	83.0	B2-U0-G2	
				4000	6804	97.2	6351	90.7		
				5000	6767	96.7	6317	90.2		
		TFT		3000	5822	83.2	5126	73.2		B3-U0-G1
				4000	5999	85.7	5600	80.0		
				5000	5967	85.2	5570	79.6		

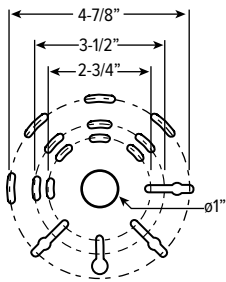
- Photometrics tested in accordance with IESNA LM-79. Results shown are based on 25°C ambient temperature.
- Wattage shown is average for 120V through 277 input.

DISTRIBUTION DETAILS



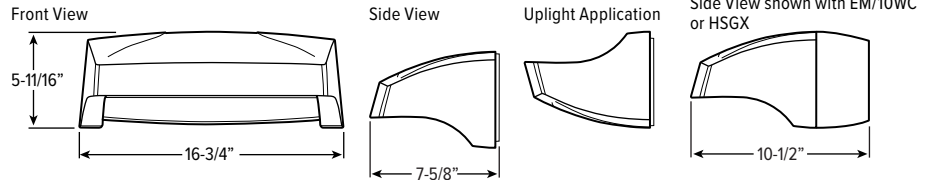
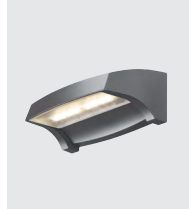
FIXTURE DETAILS

BOLT PATTERN DETAIL



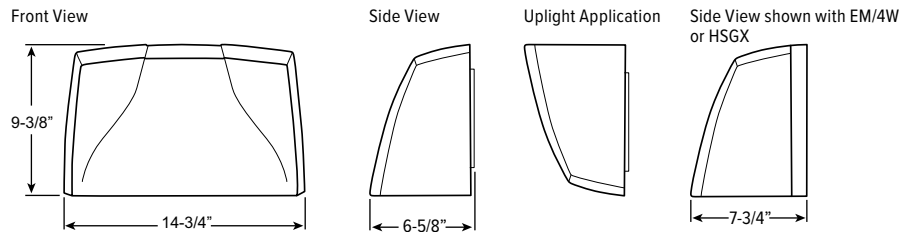
VVPH

Weight: 15 lbs; maximum weight with EM/10WC or HSGX: 27 lbs.



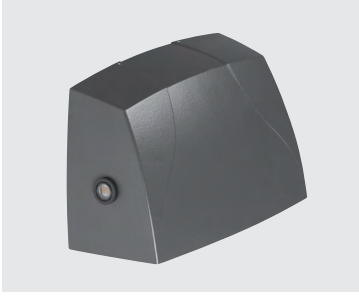
VVPU

Weight: 23 Lbs



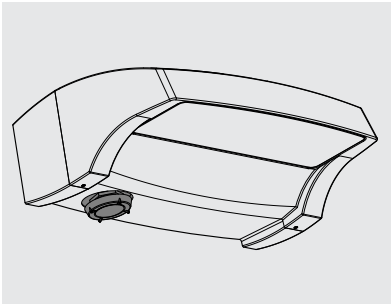
OPTIONS DETAILS

PC OPTION



Factory-installed button-style photocell, right side when viewed from behind fixture. (120V, 208V, or 277V only; must specify voltage)

OCCUPANCY SENSOR DETAILS



EXAMPLE: OCCWS FSP-211-L2

FEATURES

- Fully adjustable high and low dimmed light levels.
- Designed for LED fixtures; rated for extreme temperatures and up to 200,000 on/off cycles.
- Hold-off setpoint with automatic calibration option for convenience and added energy savings.
- Adjustable via handheld wireless configuration tool (ordered separately).
- IP66 rated with choice of lenses for wet and outdoor locations, and mounting heights from 8' to 20'.
- Adjustable time delay and cutoff delay.
- Factory set to 10% dimming at 5 minutes, cutoff at 1 hour.

ORDERING INFORMATION

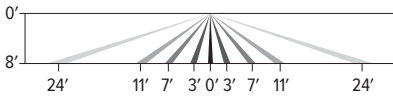
OCCWS FSP-211__ Factory-installed occupancy sensor, must specify lens (120V or 277V only)

LENS

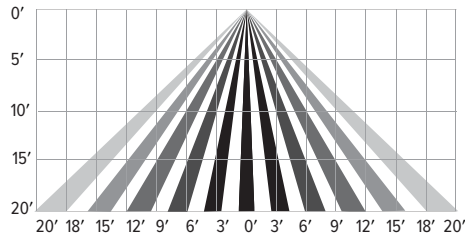
- L2 Coverage at 8' mounting height: $\phi 48'$
- L3 Coverage at 20' mounting height: $\phi 40'$

COVERAGE PATTERNS

L2 LENS



L3 LENS



REMOTE CONTROLLER

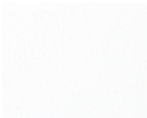


FSIR-100 Remote controller for occupancy sensor (specify quantity per project)

Initial setup and subsequent sensor adjustments are made using a handheld configuration tool (FSIR-100). The wireless tool stores up to five sensor parameter profiles to speed configuration of multiple sensors. Please specify quantity required per project. Visit wattstopper.com for more information.

FINISH OPTIONS

WHITE



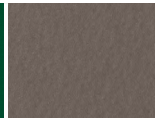
BLACK



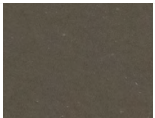
GREEN



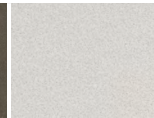
MEDIUM BRONZE



DARK BRONZE



SILVER



GRAY



For custom color, please specify RAL code or a manufacturer code with description. All custom colors other than RAL require two sample swatches, minimum 1" square.

