

SMALL TRAPEZOID WALL PACK

WPTZS

LED

CATALOG #: _____ TYPE: _____

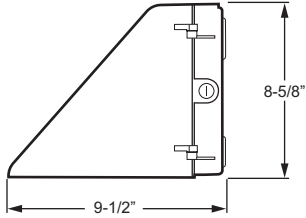
PROJECT: _____ NOTES: _____

EXAMPLE **WPTZS** - **L20/750** - **OPTIONS** - **DIM** - **UNV**

SERIES LUMEN PACKAGE CRI & CCT OPTIONS DRIVER VOLTAGE



CROSS SECTION



8-3/4" x 8-5/8" x 9-1/2"

ORDERING INFORMATION

SERIES
WPTZS Small Trapezoid Wall Pack

DRIVER
DIM 10% dimming driver prewired for 0-10V low voltage applications

LED PACKAGE

| EXAMPLE: L20/750 | | | AVERAGE SYSTEM WATTAGE |
|------------------|----------------|---------------------|------------------------|
| LUMEN PACKAGE | NOMINAL LUMENS | MINIMUM CRI & CCT | |
| L20 | 2000 | 750 = 70 CRI, 5000K | 25 |

VOLTAGE

| | |
|-----|----------|
| 120 | 120V |
| 208 | 208V |
| 240 | 240V |
| 277 | 277V |
| UNV | 120-277V |
| 347 | 347V |
| 480 | 480V |

OPTIONS

SF Single fuse (120V or 277V only; must specify voltage)

DF Double fuse (208V or 240V only; must specify voltage)

SP2 2.5kV surge protection

PC Factory-installed photocell (120V, 208V and 277V only, must specify voltage)

FEATURES

- ▶ Dark bronze finish only.
- ▶ Clear, heat and impact-resistant, tempered glass lens standard.
- ▶ Fully gasketed for wet locations.
- ▶ Provides full cutoff.
- ▶ 1/2" NPS threaded hub and plugged conduit entry points.

LED

FOOTCANDLE DISTRIBUTION

SPECIFICATIONS

Housing – Heavy-duty die-cast aluminum construction.

Lens – Heat and impact-resistant clear tempered glass standard.

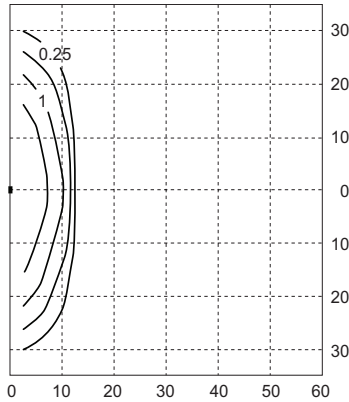
Finish – Powder coated on heavy-duty die-cast housing. Dark bronze finish only.

Electrical – Electronic 120-277V or 347/480V dimmable driver. Metal core PCB LED array.

Mounting – Wall mounts directly over a 4" maximum recessed outlet box or accepts 1/2" surface conduit.

Labels – cCSAus listed to STD22.2 No. 250.0 certified as luminaire suitable for wet locations. 40°C maximum ambient operating temperature.

Warranty – 5-year limited warranty.



FIXTURE: **WPTZS-L20/750**

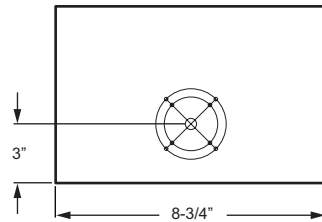
Footcandle calculations based on standard building reflectance of .10 with a ground reflectance of .0 and a light loss factor of .90.

Fixture installed at 12' mounting height.

- ▶ **Efficacy: 83 lm/W**
- ▶ **Flux: 2068 lm**
- ▶ **CRI: 74**
- ▶ **CCT: 5147**
- ▶ **BUG Ratings: B1-U1-G1**

MOUNTING

BACKVIEW



BOLT CIRCLE PATTERN DETAIL

