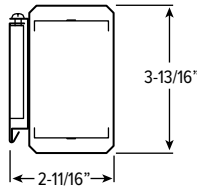


AX2WUD^{PoE} 2" Wall Mount Architectural Up/Down



CATALOG #: _____

TYPE: _____

PROJECT: _____

FEATURES

- Williams turn-key Power over Ethernet (PoE) solution provides plug-and-play networked lighting and control.
- Sleek, slim architectural design provides direct or indirect light
- Slightly wrapped lens creates glowing edge and smooth illumination
- Attractive source of direct or indirect lighting for use in offices, hallways, conference rooms and medical facilities
- Made Right Here® in the USA

SYSTEM REQUIREMENTS

- Lighting system (site software)
- Gateway or alternate server (runs software)
- PoE switches or Ethernet switches and mid-span power injectors
- See hew.com/poe for details

SPECIFICATIONS

- HOUSING – Extruded aluminum.
- SHIELDING – Frosted acrylic lens.
- FINISH – Matte, smooth silver sparkle standard. All other colors default to textured finish. Polyester powder coat bonded to phosphate-free, multi-stage pretreated metal. All parts painted after fabrication to facilitate installation, increase efficiency, and inhibit corrosion.
- ELECTRICAL – High quality mid-power LED board. L70 > 60,000 hours per IES TM-21. Low-voltage DC fixture, to be fed by Class 2 power supply.
- MOUNTING – Wall
- LISTINGS –
 - cETLus conforms to UL STD 1598 and UL STD 8750. Certified to CAN/CSA STD C22.2 No. 250.0. Suitable for damp locations.
- WARRANTY – 5-year limited warranty, see hew.com/warranty.

ORDERING EXAMPLE: AX2WUD - 4 - P25U/P25D/835 - S - OPTIONS - POE N

ORDERING INFO

SERIES	LENGTH	LUMEN PACKAGE (EXAMPLE: P25U/P25D/835)				FIXTURE TYPE		
AX2WUD	4 4'	Specify lumen packages: U for Uplight and D for Downlight				F Feeder unit ^[1]		
	8 8'	LUMENS ^[4]	U or D	CRI	CCT	J Joiner unit ^[2]		
	4'		U Uplight	8 80	30 3000K	S Stand-alone unit ^[3]		
	P25 2,500lm	D Downlight	9 90 ^[5]	35 3500K				
	8'				40 4000K			
		P51 5,100lm			50 5000K			

OPTIONS ^[6]

- EM/CP12 Remote mount 12-watt Iota emergency LED battery ^[8]
- ASY Asymmetric reflector ^[9]

CONTROL ^[7]

- POE N Power over Ethernet network node
- POE D Power over Ethernet device node ^[10]

NOTES

- Straight white cord standard, two end plates, field installed.
- Straight white cord standard, no end plates
- Straight white cord standard, two end plates installed
- Nominal lumen output based on 3500K. Actual lumens may vary +/-5%. See page 2 for FIXTURE PERFORMANCE DATA.
- Extended lead times may apply. Consult factory for availability.
- See hew.com/poe for compatible sensors & switches. See page 3 for FINISH OPTIONS.
- Node requires remote mounting. See page 3 for REMOTE MOUNT DETAILS. AX2WUD uses separate nodes for switching.
- Requires one additional category cable run to switch. See page 3 for REMOTE MOUNT DETAILS.
- Uplight only; reduces lumen output up to 25%
- Not available for fixtures over 40W.



AX2WUD^{PoE} 2" Wall Mount Architectural Up/Down

FIXTURE PERFORMANCE DATA

UP OR DOWNLIGHT

	LED PACKAGE	LUMENS	WATTAGE	EFFICACY (LM/W)
4	P25	2515	25	100.6
8	P51 ¹	5114	49	104.4

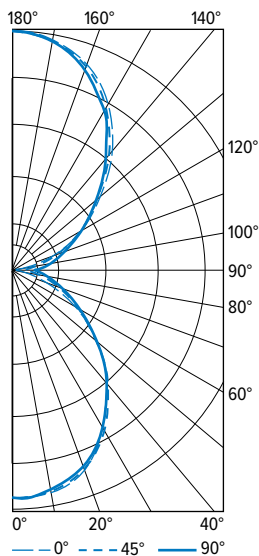
- ¹ Fixture contains two nodes; one power drop per node required.
- Photometrics tested in accordance with IESNA LM-79. Results shown are based on 25°C ambient temperature.
- Wattage shown is average for 120V through 277 V input
- Results based on 3500K, 80 CRI, actual lumens may vary +/- 5%
- Use multiplier table to calculate additional options.
- Fixture performance is the same for up and downlight.

MULTIPLIER TABLE

		COLOR TEMPERATURE	
		CCT	CONVERSION FACTOR
80 CRI		2700K	0.97
		3000K	0.99
		3500K	1.00
		4000K	1.03
		5000K	1.06
90 CRI		2700K	0.80
		3000K	0.82
		3500K	0.83
		4000K	0.86
		5000K	0.89

PHOTOMETRY

AX2WUD-4-P25U/P25D/835-S Total Luminaire Output: 5030 lumens; 50 Watts | Efficacy: 101 lm/W | 84 CRI; 3478K CCT

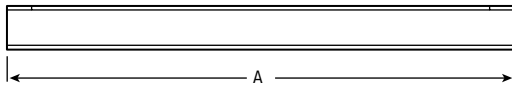


VERTICAL ANGLE	HORIZONTAL ANGLE			ZONAL LUMENS
	0°	45°	90°	
0	987	987	987	
5	1001	979	972	93
15	956	946	937	266
25	861	849	842	392
35	712	714	702	444
45	542	547	540	422
55	372	394	390	350
65	219	256	269	252
75	95	145	176	154
85	23	71	110	80
90	5	49	91	
95	33	86	135	93
105	135	164	198	176
115	263	273	285	274
125	420	406	412	368
135	583	563	547	437
145	749	727	713	456
155	885	871	852	402
165	982	977	967	275
175	1028	1031	1022	97
180	1033	1033	1033	

LUMEN SUMMARY	ZONE	LUMENS	% FIXTURE
	0 - 30	751	15
	0 - 40	1195	24
	0 - 60	1967	39
	0 - 90	2452	49
	90 - 120	543	11
	90 - 150	1804	36
	90 - 180	2579	51
	0 - 180	5030	100

MOUNTING DETAILS

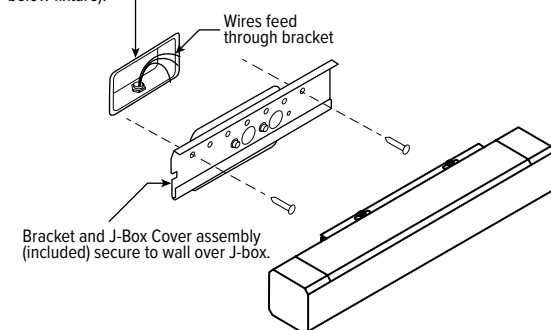
SIDE VIEW



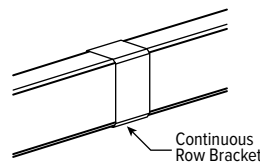
NOMINAL LENGTH	ACTUAL LENGTH (A)
2'	25-7/8"
4'	48-1/16"
8'	91-1/8"

MOUNTING

J-Box (not provided) mounted **horizontally** (if attaching to existing vertical J-box, J-box cover will be partially visible below fixture).

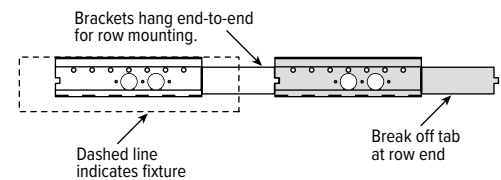


CONTINUOUS ROW FIXTURES



When row mounting fixtures, joint between fixtures will be visible at 4' or 8' intervals depending on fixture length.

ROW MOUNTING



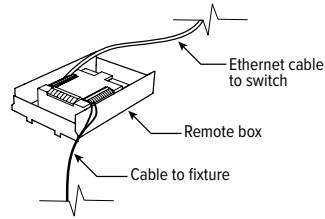
AX2WUD^{PoE} 2" Wall Mount Architectural Up/Down

REMOTE MOUNT DETAILS

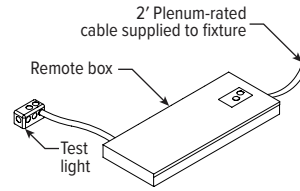
Includes 2' plenum-rated 18ga. solid cable. Remote box can be installed in:

- Above ceiling grid
- Remote closet (within 100ft)
- Surface below ceiling

NODE



NODE AND EM OPTION



FINISH OPTIONS

WHITE



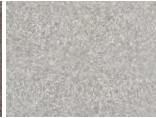
BLACK



BRONZE



NICKEL



SILVER



ALUMINUM



For custom color, please specify RAL code or a manufacturer code with description. All custom colors other than RAL require two sample swatches, minimum 1" square.

