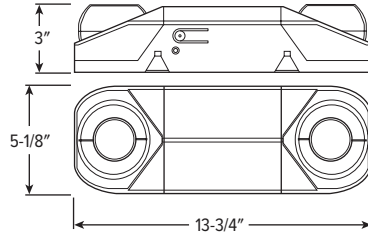
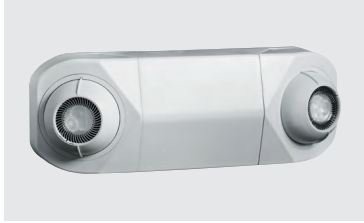


# EMER/MR <sup>LED</sup> MR-16 Style Emergency Light



CATALOG #: \_\_\_\_\_

TYPE: \_\_\_\_\_

PROJECT: \_\_\_\_\_

## FEATURES

- Two fully adjustable, ultra bright, round, 3.3W white LED lamp heads
- Charge rate/power "ON" LED indicator light and push-to-test switch for mandated code compliance testing
- Low voltage disconnect prevents battery from deep discharge
- Internal solid-state transfer switch automatically connects the internal battery to lamp heads for minimum 90-minute emergency illumination
- Fully automatic solid-state, two rate charger initiates battery charging to recharge a discharged battery in 24 hours
- Surface mount via easy connect back plate, which fits most standard junction boxes and snaps into place making internal electrical connections

## ORDERING EXAMPLE: EMER/MR - WHT - OPTIONS - D

### ORDERING INFO

SERIES	HOUSING COLOR	OPTIONS	VOLTAGE
EMER/MR	WHT Industry-standard white BLK Black	PC3 Polycarbonate shield <sup>[1]</sup> WG Wireguard <sup>[2]</sup>	D 120V or 277V SV__ Special voltage <sup>[3]</sup>

## SPECIFICATIONS

- HOUSING – Injection-molded, engineering grade, 5VA flame retardant, high-impact resistant, thermoplastic in white or black finish.
- ELECTRICAL – Dual 120/277 voltage. 6V maintenance-free, rechargeable sealed lead acid battery.
- MOUNTING – Wall mount. Top and side knockout for conduit applications.
- LISTINGS –
  - UL 924 standard as an emergency light suitable for dry or damp locations (20°C - +40°C).
  - Meets NFPA 101 Life Safety Code, NEC, OSHA, Local and State Codes.
- WARRANTY – 5-year limited warranty

## NOTES

<sup>1</sup> Ships separately. See page 2 for POLYCARBONATE SHIELD DETAILS.

<sup>2</sup> Ships separately. See page 2 for WIREGUARD DETAILS.  
<sup>3</sup> Consult factory for options.

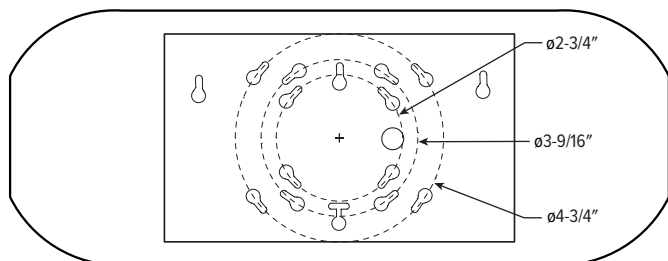
# EMER/MR<sup>LED</sup> MR-16 Style Emergency Light

## ELECTRICAL INFORMATION

	INPUT WATTS (W)	INPUT AMPS (A)
120V	4.2	0.039
277V	5.2	0.021

## MOUNTING DETAILS

### WALL MOUNT BOLT CIRCLE PATTERN



## POLYCARBONATE SHIELD DETAILS

### PC3



DIMENSIONS: 7-1/2" X 18" X 7"

## WIREGUARD DETAILS

### WG



DIMENSIONS: 13-3/4" x 15-1/4" x 6"