

CATALOG #: _____

TYPE: _____

PROJECT: _____

FEATURES

- Fully accessible without the use of tools
- Pull switch and grounded convenience outlet options available
- Optional anti-microbial white finish and pull cord available for use in healthcare applications
- Contoured architectural housing with die-cast aluminum end caps
- Keyhole mounting for easy installation
- Optional tamper-resistant screws available
- Made Right Here® in the USA

SPECIFICATIONS

- HOUSING** – 20-gauge C.R.S. fixture channel. Front housing constructed of marine grade extruded aluminum with die-cast aluminum end caps.
- REFLECTIVE SURFACES** – 92% minimum average reflective white polyester powder coat on interior steel components.
- SHIELDING** – Frosted acrylic, .125" thick.
- FINISH** – Textured matte white polyester TGIC powder coat bonded to phosphate-free, multi-stage pretreated metal. All parts painted after fabrication to facilitate installation, increase efficiency, and inhibit corrosion.
- ELECTRICAL** – High quality mid-power LED board. L70 at 50,000 hours. 25°C maximum ambient operating temperature.
- MOUNTING** – Wall.
- LISTINGS** – cETLus conforms to UL STD 1598 and UL STD 8750. Certified to CAN/CSA STD C22.2 No. 250.0. Suitable for damp locations.
- WARRANTY** – 5-year limited warranty, see hew.com/warranty.

ORDERING EXAMPLE: WMAUD - 4 - L40/835U/L40/835D - AF - OPTIONS - DIMU/DIMD - UNV

ORDERING INFO

SERIES	LENGTH	LUMEN PACKAGE (EXAMPLE: L40/835U/L40/835D)				SHIELDING
WMAUD	2 2'	Specify lumen packages: U for Uplight and D for Downlight				AF Frosted acrylic, .125" thick
	3 3'	LUMENS ^[1]	CRI	CCT	U OR D	
	4 4'	2'	8 80	27 2700K	U Uplight	
		L20 2,000lm	9 90 ^[2]	30 3000K	D Downlight	
		3'	L30 3,000lm		35 3500K	
		L40 4,000lm		40 4000K		
				50 5000K		

OPTIONS ^[3]

EM/10W	10-watt emergency battery ^[5]
PSBR/120	Single-circuit bottom-mounted pull switch on right ^[6]
PSBL/120	Single-circuit bottom-mounted pull switch on left ^[7]
PS2BR/120	Two-circuit, 4-position bottom-mounted pull switch on right ^[8]
PS2BL/120	Two-circuit, 4-position bottom-mounted pull switch on left ^[9]
APCW	Anti-microbial white pull cord ^[10]
GCOL	Grounded convenience outlet on left ^[11]
GCOR	Grounded convenience outlet on right ^[12]
TP	Tamper-resistant (hilt head) screws. ^[13]
AMW	Anti-microbial white finish
OCC__	Factory-installed occupancy sensor ^[14]
	OCCWS FS-505-PP-__ Low voltage ultrasonic sensor

CONTROL ^[4]

Specify drivers: U for Uplight and D for Downlight. Example: DIMU/DIMD
DIM_ Dimming driver
DRV_ Non-dimming driver

VOLTAGE

120 120V
277 277V
UNV 120-277V
347 347V ^[15]

NOTES

- Lumen output based on 3500 CCT. Actual lumens may vary +/-5%, see page 2 for FIXTURE PERFORMANCE DATA.
- Extended lead times may apply. Consult factory for availability.
- See page 3 for FINISH OPTIONS. See page 2 for LOW-VOLTAGE CONTROLLER.
- See page 3 for ADDITIONAL CONTROL OPTIONS.
- 4' only
- Operates downlight, 120V only
- Operates downlight, 120V only
- 120V only
- 120V only
- Packaged with fixture, field installed. Requires PSB_ or PS2BL_ option.
- 120V only
- 120V only
- This option requires a tamper-resistant tool, must be ordered separately. Please specify quantity required per project.
- Operates downlight, 120V or 277V only, must specify voltage. LVC and OCC options cannot be used simultaneously on 2' and 3' units. See page 3 for FIXTURE DETAILS.
- Not available with EM batteries



WMAUD LED Architectural Wall Mount Up/Down

FIXTURE PERFORMANCE DATA

	LED PACKAGE	DELIVERED LUMENS			TOTAL WATTAGE	EFFICACY (lm/W)
		UP	DOWN	TOTAL		
2'	L20/835U/L20/835D	1934	1934	3868	32.6	118.7
3'	L30/835U/L30/835D	3087	3087	6174	46.6	132.5
4'	L40/835U/L40/835D	4020	4020	8040	64.8	124.1

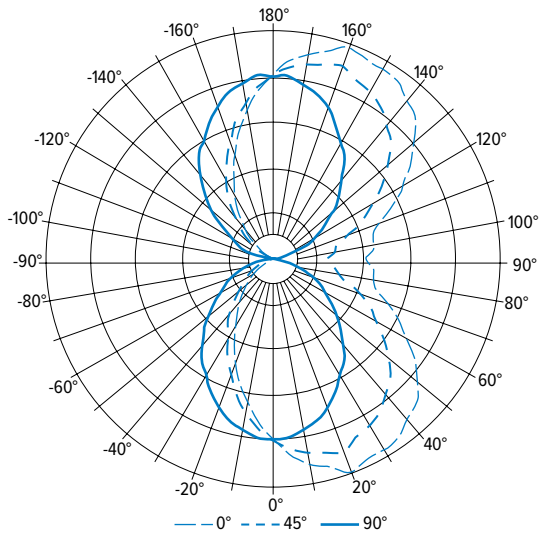
- Photometrics tested in accordance with IESNA LM-79. Results shown are based on 25°C ambient temperature.
- Wattage shown is average for 120V through 277V input.
- Results based on 3500K, 80 CRI, actual lumens may vary +/-5%
- Use multiplier table to calculate additional options.

MULTIPLIER TABLE

	COLOR TEMPERATURE	
	CCT	CONVERSION FACTOR
80 CRI	2700K	0.97
	3000K	0.99
	3500K	1.00
	4000K	1.03
	5000K	1.06
90 CRI	2700K	0.80
	3000K	0.82
	3500K	0.83
	4000K	0.86
	5000K	0.89

PHOTOMETRY

WMAUD-4-L40/835U/L40/835D-AF Total Luminaire Output: 8040 lumens; 64.8 Watts | Efficacy: 124.1 lm/W | 82.3 CRI; 3579K CCT



VERTICAL ANGLE	HORIZONTAL ANGLE					ZONAL LUMENS
	0°	45°	90°	135°	180°	
0	1440	1440	1440	1440	1440	1440
5	1572	1522	1431	1364	1321	136
15	1709	1592	1337	1127	1035	383
25	1762	1572	1175	861	739	561
35	1741	1494	995	629	500	657
45	1622	1329	765	395	281	661
55	1364	1073	547	218	124	580
65	1099	833	358	83	22	455
75	841	558	179	6	11	321
85	810	486	41	21	41	264
90	739	445	0	39	57	266
95	805	490	44	30	49	
105	836	566	182	6	11	322
115	1092	838	359	80	20	454
125	1353	1081	557	221	124	580
135	1601	1329	771	395	281	661
145	1726	1494	1012	633	504	659
155	1749	1569	1190	864	742	561
165	1704	1593	1357	1129	1040	384
175	1569	1525	1455	1372	1329	137
180	1444	1444	1444	1444	1444	

LUMEN SUMMARY	ZONE	LUMENS	% FIXTURE
	0 - 30	1080	13
0 - 40	1737	22	
0 - 60	2977	37	
0 - 90	4017	50	
90 - 120	1042	13	
90 - 150	2941	37	
90 - 180	4023	50	
0 - 180	8040	100	

LOW-VOLTAGE CONTROLLER

120V or 277V only

EXAMPLE: LVC2U/D			
CONTROLLER	FUNCTION		
	LOAD 1		LOAD 2
LVC1 1-circuit	U D	Up Down	
LVC2 2-circuit	U/ D	Up	D Down
LVC3 Dimming control	DIMU	0-10V dimming for Uplight	/D Down /DIMD 0-10V dimming for Downlight
	DIMD	0-10V dimming for Downlight	/U Up /DIMU 0-10V dimming for Uplight
	SEQUD	Up and down sequentially switched	



WMAUD ^{LED} Architectural Wall Mount Up/Down

ADDITIONAL CONTROL OPTIONS

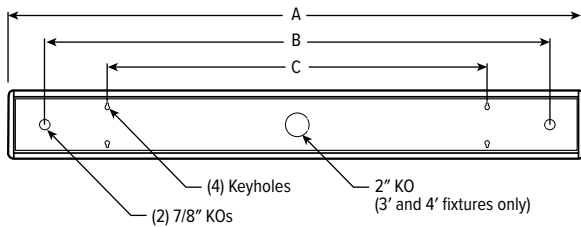
Specify drivers: **U** for Uplight and **D** for Downlight. Example: DIMU/DIMD

Note: Lumen restrictions apply, consult product builder at hew.com/product-builder.

CATALOG NUMBER	DESCRIPTION
DRV	Driver prewired for non-dimming applications
DIM	Dimming driver prewired for 0-10V low voltage applications
DIM1	1% dimming driver prewired for 0-10V low voltage applications
DIM LINE	Line voltage dimming driver (Must specify 120V or 277V only)
SD40	40% step-dimming driver
SD50	50% step-dimming driver
DALI	DALI dimming driver
LTE LINE	Lutron Hi-lume 1% 2-wire dimming driver forward phase line voltage controls (120V only)
LDE1	Lutron Hi-lume 1% EcoSystem dimming LED driver
LDE5	Lutron 5-Series 5% EcoSystem dimming LED driver
ELDO SOLOB	EldoLED Solodrive, 0.1% dimming driver for 0-10V controls
ELDO SOLOB DALI	EldoLED Solodrive, 0.1% dimming driver for DALI controls
ELDO ECO1	EldoLED Ecodrive, 1% dimming driver for 0-10V controls
ELDO ECO1 DALI	EldoLED Ecodrive, 1% dimming driver for DALI controls

FIXTURE DETAILS

BACKVIEW



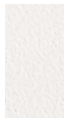
	DIMENSIONS		
	A	B	C
2'	25-1/8" O.C.	20-1/2" O.C.	16" O.C.
3'	37-1/8" O.C.	32-1/2" O.C.	32" O.C.
4'	49-1/8" O.C.	42-1/2" O.C.	32" O.C.

OCCUPANCY SENSOR

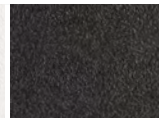


FINISH OPTIONS

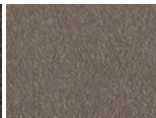
WHITE



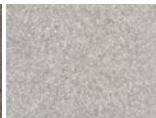
BLACK



BRONZE



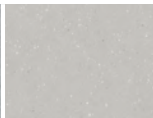
NICKEL



SILVER



ALUMINUM



For custom color, please specify RAL code or a manufacturer code with description. All custom colors other than RAL require two sample swatches, minimum 1" square.

